



# INDOFINE Chemical Company, Inc.

121 Stryker Lane, Bldg. 30, Suite 1 • Hillsborough, NJ 08844 • U.S.A.

Phone: (908) 359-6778 • FAX: (908) 359-1179

website: [www.indofinechemical.com](http://www.indofinechemical.com)

e-mail: [chemical@indofinechemical.com](mailto:chemical@indofinechemical.com)

## CERTIFICATE OF ANALYSIS

Catalog Number: 024739S

Product Name: **CURCUMIN with HPLC**  
(Diferuloylmethane)

CAS Number: [458-37-7]

Lot Number: 1912365

Chemical Formula: C<sub>21</sub>H<sub>20</sub>O<sub>6</sub>

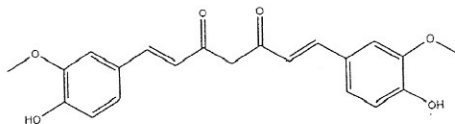
Molecular Weight: 368.39

Loss on Drying: 1.62%

Appearance: Orange powder

Storage: Store in a cool, dry place. Protect from light

Purity(HPLC): 99.01%



Prepared by:  
Ramesh Mandadi  
Ramesh Mandadi  
Director of Operations

Reviewed and Approved by:  
Sujata Moton  
Sujata Moton  
VP



# INDOFINE Chemical Company, Inc.

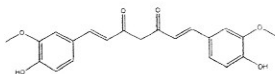
121 Stryker Lane, Bldg. 30, Suite 1 • Hillsborough, NJ 08844 • U.S.A.

Phone: (908) 359-6778 • FAX: (908) 359-1179

website: [www.indofinechemical.com](http://www.indofinechemical.com)

e-mail: [chemical@indofinechemical.com](mailto:chemical@indofinechemical.com)

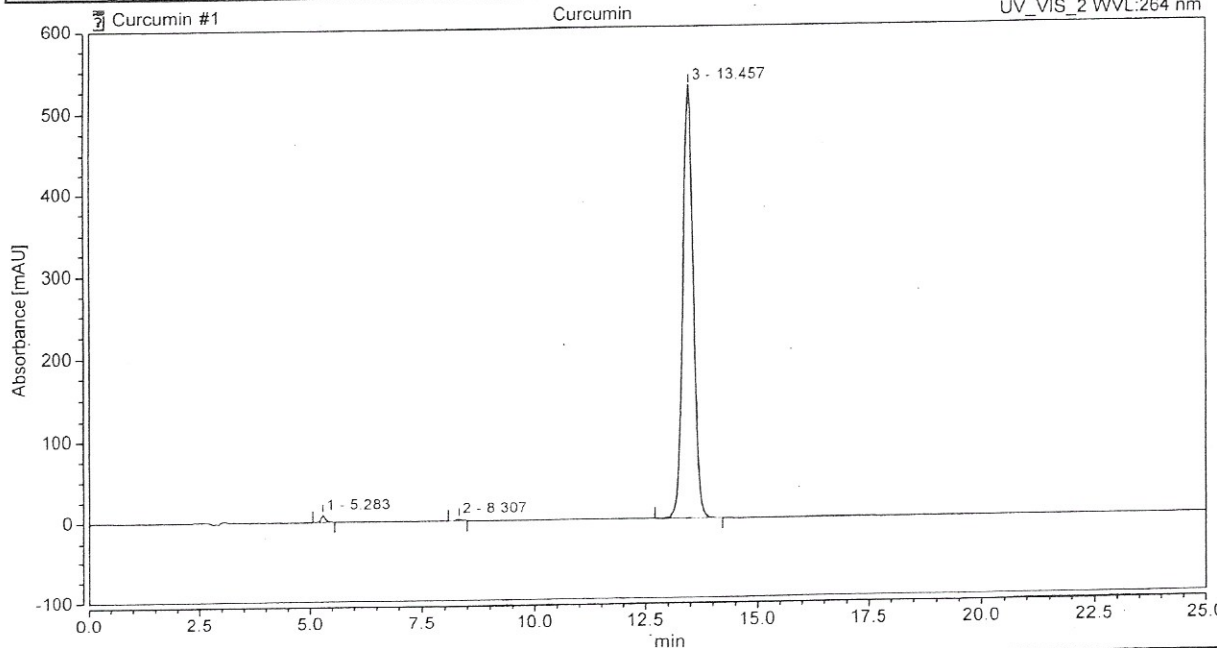
## HPLC ANALYSIS



Catalog No.: 024739S  
Product Name: Curcumin  
Lot No.: 1912365

Injection Details		
Injection Name:	Curcumin	Run Time (min): 25.00
Vial Number:	BB1	Injection Volume: 10.00
Injection Type:		Channel: UV_VIS_2
Calibration Level:		Wavelength: 264.0
Instrument Method:	Curcumin	Bandwidth: 8
Processing Method:	Curcumin	Dilution Factor: 1.0000
		Sample Weight: 1.0000

### Chromatogram



Integration Results							
No	Retention Time min	Area mAU*min	Height mAU	Relative Area %	Plates (USP)	Resolution (USP)	Asymmetry
1	5.283	1.044	8.835	0.74	13977	14.06	1.27
2	8.307	0.359	2.286	0.25	17479	15.46	1.01
3	13.457	140.217	528.114	99.01	16812	n.a.	1.00
Total:		141.620	539.235	100.00	48268.00		

Prepared by:  
Ramesh Mandadi  
Ramesh Mandadi  
Director of Operations

Reviewed and Approved by:  
Sujata Moton  
Sujata Moton  
VP